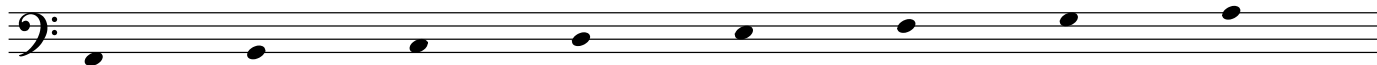


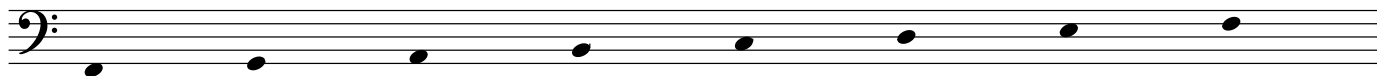
# Harmonic and Melodic Minor Scale Workout

1. Add the sharps or flats needed for each scale

A harmonic minor

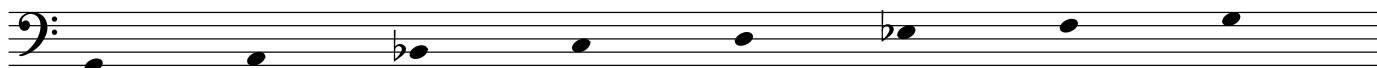


F harmonic minor

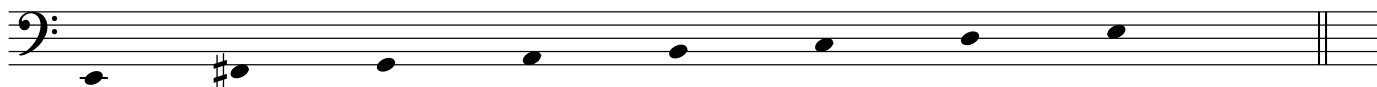


2. Turn these natural minor scales into harmonic minor scales

G harmonic minor



E harmonic minor



4. Finish the melody using the scale indicated, make sure to notate any sharps and flats.

C harmonic Minor

