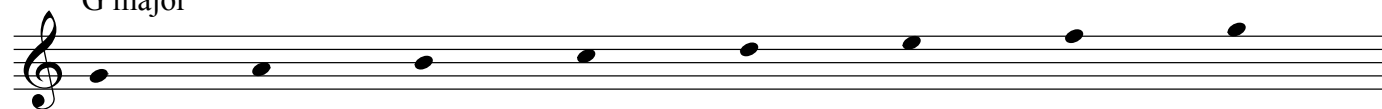


Major Scale Workout


1. Add the sharps or flats needed for each scale

G major



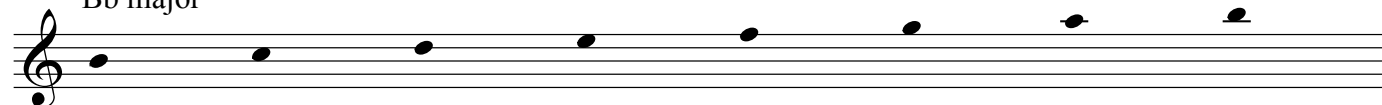
A musical staff in treble clef showing the notes of a G major scale: G (first line), A (first space), B (second line), C (second space), D (third line), E (third space), F (fourth line), and G (fourth space).

F major



A musical staff in treble clef showing the notes of an F major scale: F (first space), G (first line), A (first space), B (second line), C (second space), D (third line), E (third space), and F (fourth line).


Bb major



A musical staff in treble clef showing the notes of a Bb major scale: Bb (first space), C (first line), D (first space), E (second line), F (second space), G (second space), A (third line), and Bb (third space).

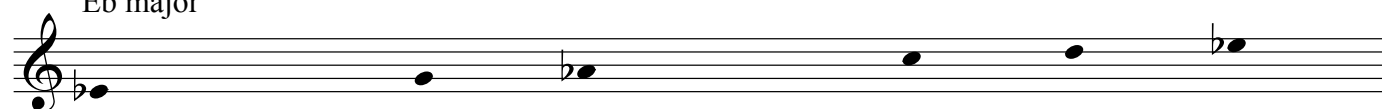
2. Add the missing notes

D major



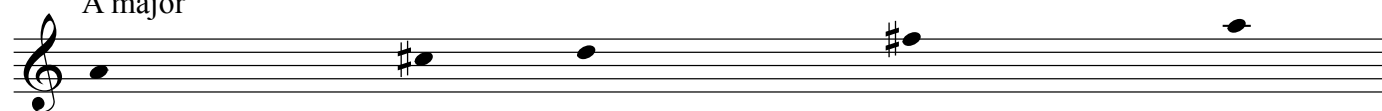
A musical staff in treble clef showing the notes of a D major scale: D (second line), E (second space), F# (third line), G (third space), A (fourth line), B (fourth space), C (fifth line), and D (fifth space).

Eb major



A musical staff in treble clef showing the notes of an Eb major scale: Eb (first space), F (first line), G (first space), Ab (second line), Bb (second space), C (second space), D (third line), and Eb (third space).

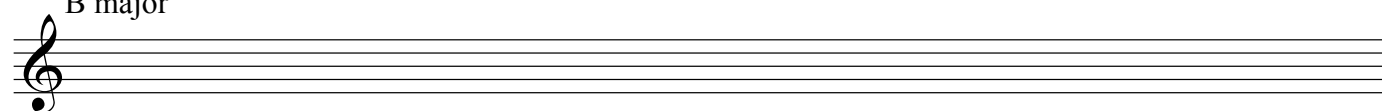
A major



A musical staff in treble clef showing the notes of an A major scale: A (second line), B (second space), C# (third line), D (third space), E (fourth line), F# (fourth space), G (fifth line), and A (fifth space).

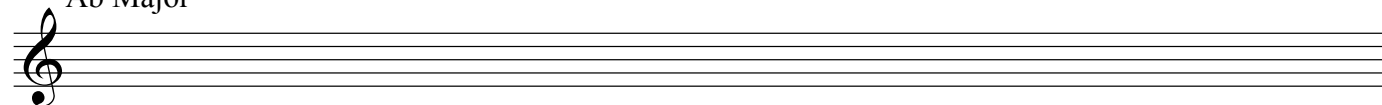
3. Write the entire major scale

B major



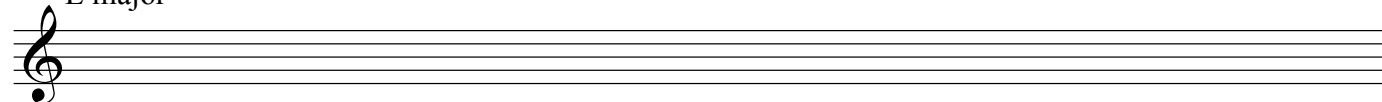
An empty musical staff in treble clef for writing the B major scale.

Ab Major



An empty musical staff in treble clef for writing the Ab Major scale.

E major



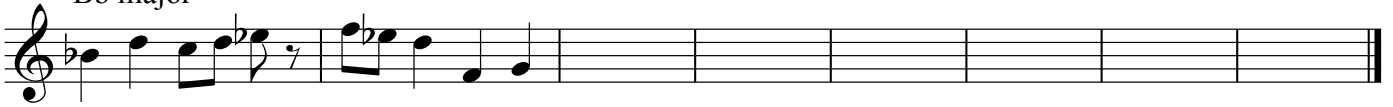
An empty musical staff in treble clef for writing the E major scale.

4. Finish each melody using the scale indicated, Make sure to notate any sharps and flats.

C major



Bb major



A major

